



OmniCenter[®] Web Application Response Time Module

OmniCenter Web Application Response Time module (Web ART) is designed to allow IT organizations to get a realistic view of user experienced performance and easily identify the source of performance slowdowns.

Multiple Data Sources for Accurate Information

OmniCenter Web ARTM integrates multiple data sources into a simple web-based dashboard to provide an instant view into detailed application performance, both locally and from around the enterprise WAN, without installing expensive and hard-to-manage probes.

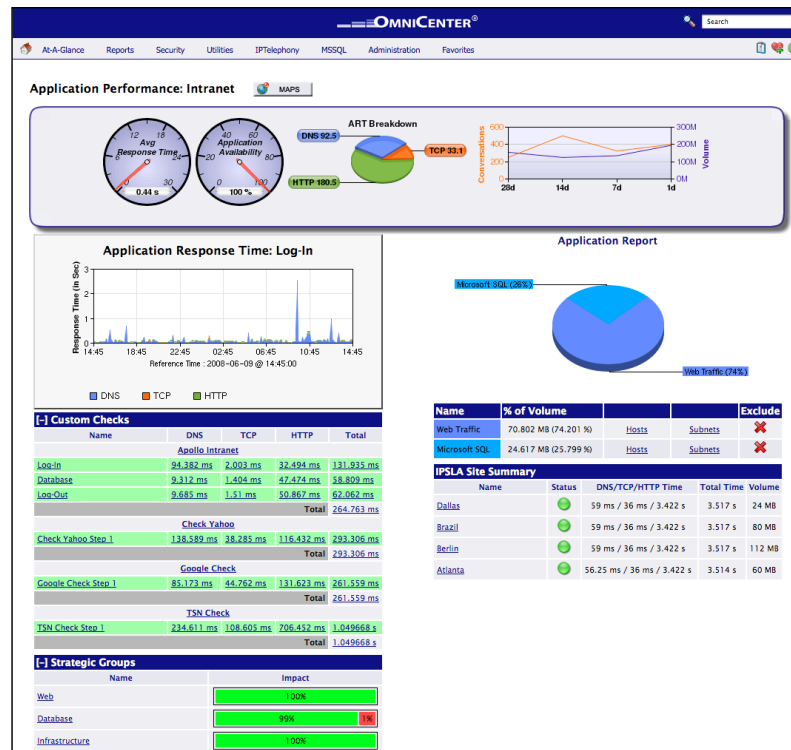
Complex Multi-Part Synthetic Transactions

By using a simple wizard-based web configuration, the Web ART software allows administrators to configure complex multi-part web transactions, including multipart forms and authentication, and benchmark each step individually. DNS lookups, TCP connections, and HTTP transfer times are recorded individually and proactive alerts can be configured based on any individual component, or on total transaction time.

Multi-part tests allow administrators to define dependencies, follow on-page links, define regular expressions to match in the results, and receive alerts when any step in a transaction returns an unexpected failure.

Integration with Traffic Data

Using Web ART in conjunction with the optional OmniCenter Flow module, you can view detailed statistics about the application traffic, including top clients and servers,



protocol and port breakdowns, real-time connection statistics, and per-site application volume. This level of detail is possible using flow export from existing routers or switches, such as NetFlow, J-Flow, or S-Flow protocols.

Administrators can easily view per-site data to identify top application users, end-user systems with misconfigurations, and end-users who are misusing resources.

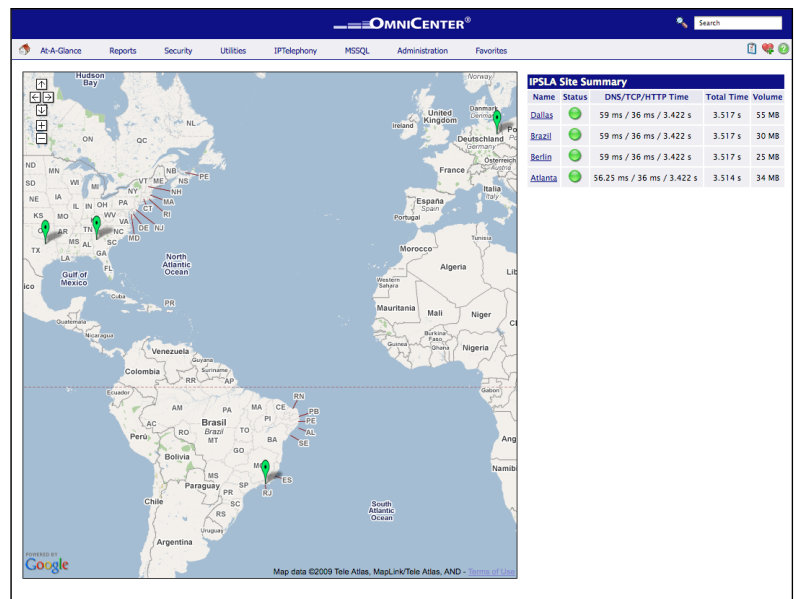
Remote Site Response Time Monitoring - Without Probes

Using the existing Cisco IPSLA technology built into most versions of Cisco's IOS software, OmniCenter Web ART can dynamically measure the time required for each step in accessing your web application from your remote sites, and visually integrate that data with Google(R) Maps to provide an instant picture of which remote sites are affected by poor application performance. OmniCenter provides automated tools to assist in configuring IPSLA on your existing devices, or can integrate with manually-configured settings, simplifying the administrative burden of deploying an application response time management solution.

Identify your Application Bottlenecks - Easily

Web ART provides the tools administrators have been asking for in order to quickly isolate end-user performance problems and identify the source of the issue so it can be resolved quickly, improving service levels for users and drastically reducing the labor costs involved in troubleshooting performance issues.

Custom mapping integration allows administrators to upload application specific diagrams and superimpose device and threshold status directly onto them, so that users and technicians can view the data in a way already familiar to them, making problems obvious instantly.



Web ART is an add-on module for Neteo's OmniCenter line of fully integrated Network Management appliances. By using an appliance-based architecture, OmniCenter allows for faster and easier deployment with no installation hassles, and provides comprehensive network management for servers, routers, firewalls, switches, load balancers, and other enterprise IT devices with no agents, clients, probes, or software to install.

Netreo Inc.

www.netreo.net
(866) NETREO1
(866) 638-7361

For more information or to arrange a demonstration, please contact Neteo Sales at **(866) NETREO1 (866-638-7361)** or by email at info@netreo.net.